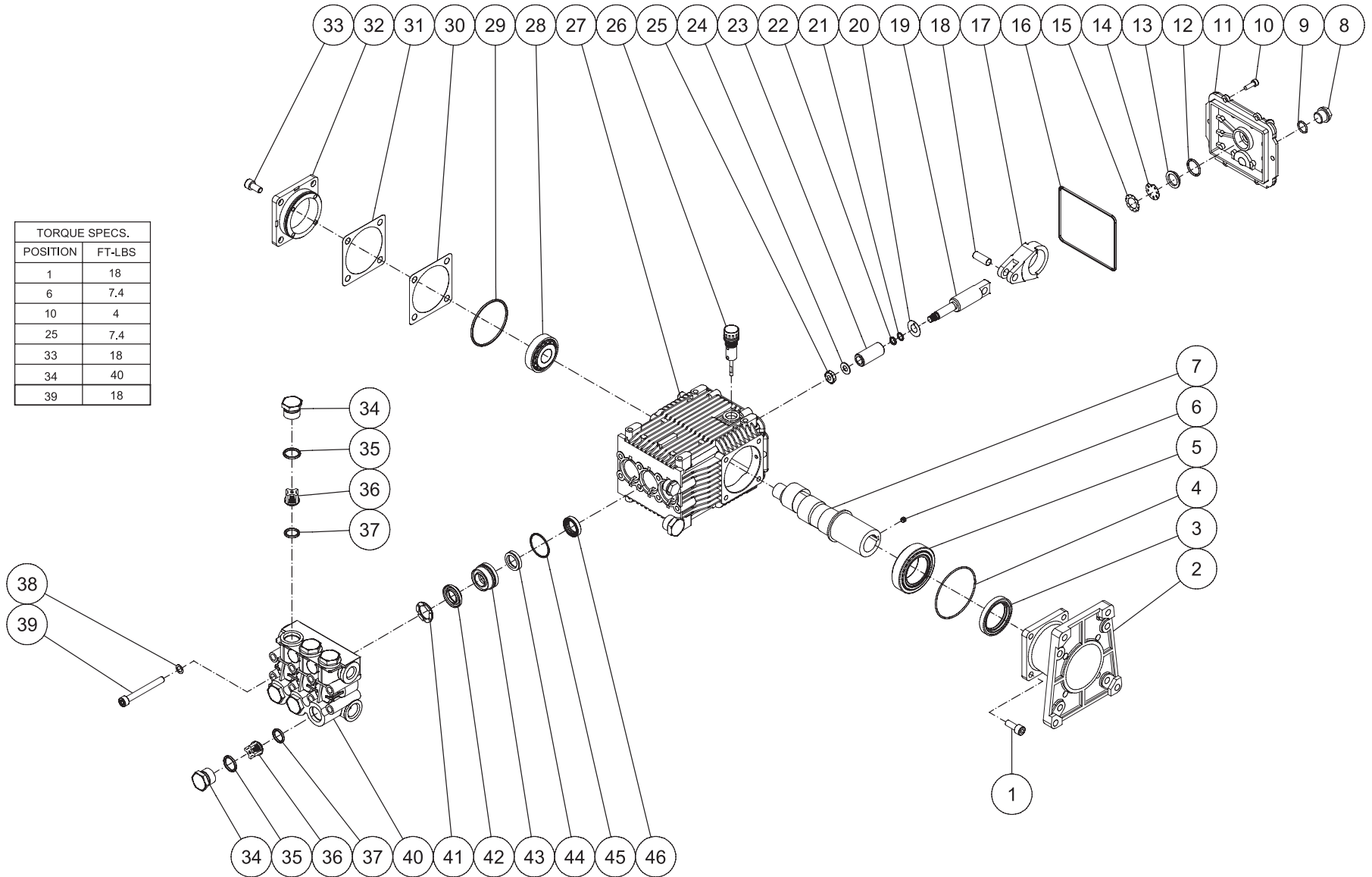


PUMP ASSEMBLY (3-0310)

TORQUE SPECS.	
POSITION	FT-LBS
1	18
6	7.4
10	4
25	7.4
33	18
34	40
39	18



3-03010-061913 JDK

Call for Parts 888-279-9274

3-0310 061913 RAG

PUMP ASSEMBLY							
ITEM	DESCRIPTION	PART #	QTY	ITEM	DESCRIPTION	PART #	QTY
1	SCREW	27-8432	4	25	NUT (SEE KIT 70-0352)	30-6020	3
2	PUMP FLANGE	46-0714	1	26	OIL DIPSTICK	39-0090	1
3	OIL SEAL (SEE KIT 70-0337)	26-0194	1	27	CRANKCASE	46-1198	1
4	O-RING (SEE KIT 70-0337)	25-0397	1	28	BEARING	48-0072	1
5	BEARING	48-0062	1	29	O-RING (SEE KIT 70-0337)	25-0380	1
6	SET SCREW	27-8886	1	30	SHIM	46-0705	(1-3)
7	CRANKSHAFT	46-0959	1	31	SHIM	46-0704	(1-3)
8	PLUG	39-0086	2	32	BEARING CAP/SUPPORT	46-0703	1
9	O-RING	25-0325	2	33	BOLT	27-8884	4
10	BOLT	27-8885	6	34	VALVE CAP	39-0095	6
11	CRANKCASE COVER	46-0719	1	35	O-RING	25-0160	6
12	O-RING	25-0370	1	36	VALVE (SEE KIT 70-0179)	SEE KIT	6
13	OIL SIGHT GLASS	46-0670	1	37	O-RING (SEE KIT 70-0179)	25-0386	6
14	OIL REFLECTOR	46-0824	1	38	LOCKWASHER	29-0154	8
15	SPRING RETAINER	46-0671	1	39	BOLT	27-8440	8
16	O-RING (SEE KIT 70-0337)	25-0398	1	40	MANIFOLD	46-1186	1
17	CONNECTING ROD	46-0922	3	41	SUPPORT RING (SEE KIT 70-0178)	46-0710	3
18	PISTON PIN	46-0698	3	42	V PACKING (SEE KIT 70-0177)	46-0709	3
19	PLUNGER ROD	46-0699	3	43	PACKING RETAINER	46-0708	3
20	SLINGER WASHER (SEE KIT 70-0352)	46-0700	3	44	LOW PRESSURE SEAL (SEE KIT 70-0177)	46-0707	3
21	O-RING (SEE KIT 70-0352)	25-0404	3	45	O-RING (SEE KIT 70-0177)	25-0384	3
22	O-RING (SEE KIT 70-0352)	25-0382	3	46	OIL SEAL (SEE KIT 70-0337)	46-0931	3
23	PISTON (SEE KIT 70-0352)	46-0701	3	47	O-RING	25-0372	1
24	WASHER/GASKET (SEE KIT 70-0352)	26-0191	3	48	PLUG	39-0088	1

REPLACEMENT KITS				
KIT #	DESCRIPTION	ITEMS	# OF ASSEMBLIES	# OF CYLINDERS
70-0337	KIT - OIL SEALS	3,4,16,29,46	1,1,1,1,3	3
70-0352	KIT - PISTONS	20-25	3	3
70-0177	KIT - HIGH PRESSURE SEALS	42,44,45	3	3
70-0178	KIT - SUPPORT RINGS	41	3	3
70-0179	KIT-VALVES	36,37	6	3